

# COMMERCIAL KITCHEN

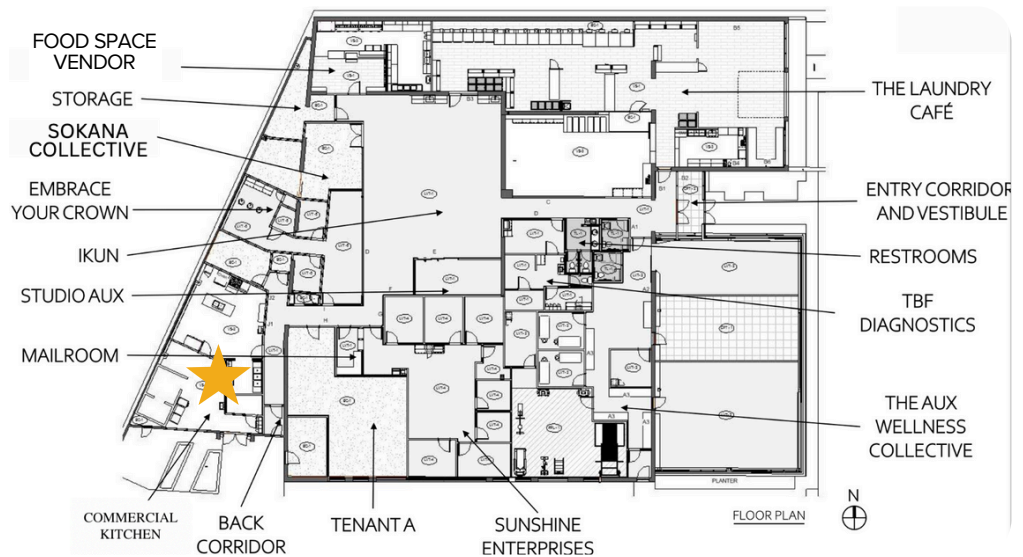
## FULLY EQUIPPED

The commercial kitchen space is fully equipped with the following equipment:

COMMERCIAL KITCHEN	Qty	Information
Item Name		
Dishwasher undercounter	1	<a href="#">Hobart Undercounter Dishwasher</a>
Griddle w/stand	1	<a href="#">Garland Group - Griddles &amp; Grills (garland-group.com)</a>
6 Burner range w/ oven base	1	<a href="#">6 Burner Range - WebstaurantStore</a>
Convection oven, double	1	<a href="#">Garland Group - Ranges (garland-group.com)</a>
Two Cop. Walk in Cooler/Freezer	1	<a href="#">Kolpak Custom Walk In Cooler and Freezers</a>
Refrigeration system - cooler	1	<a href="#">Cooler Refrigeration System</a>
Refrigeration system - Freezer	1	<a href="#">Freezer Refrigeration System</a>
Steamer double	1	<a href="#">AccuTemp   Commercial Kitchen Equipment</a>
1 door Freezer Reach in	1	Hoshizaki # F1A-HSL
2 door Refrigerator Reach in	1	<a href="#">R2A-HS, Refrigerator, Two Section Upright, Half Stainless Doors with Lock - Hoshizaki America, Inc.</a>
Kitchen hood	1	CaptiveAire - Model 6024 ND-2-PSP-F
SK-4 Hand sinks w/ side splashes	3	<a href="#">Advance Tabco® -Hand Sinks</a>
SK-5 Three Compartment Sink w/pre pinse spray/faucet	1	<a href="#">Advance Tabco® -3 Compartment Sinks</a>
SK-6 Dishtable w/ pre-rinse spray & rack shelf	1	<a href="#">Advance Tabco® -Dishtable</a>
SK-8 Two Compartment Prep Sink	1	Custom-NSF
Ambient cart, Mobile	1	<a href="#">Home (lockwoodusa.com)</a>
Heated cabinets, mobile	2	<a href="#">Heated Holding - FWE - FWE</a>

## LOCATION

The Commercial Kitchen is located in the southwest corner of the The Aux with a serving counter that is accessible to the Ikun common gathering space. The second food-related space, detailed below, is also accessible from the IKUN.



# COMMERCIAL KITCHEN

The Aux seeks a food-based entrepreneur to lease this fully-equipped 1,100 SF commercial kitchen. The kitchen has its own direct entrance and loading dock and includes a service counter for direct customer sales. The space is suited for many types of potential users: a shared kitchen operator ready to provide access to many food entrepreneurs; a food business that needs expanded production space along with counter service to Aux customers; a food incubator operator desiring to help start-up businesses with kitchen space and pop-up brick and mortar options within the building; a restaurant user or catering business who seeks both food production and on-site food services and event support - and many other creative food programming options. Monthly gross rent is approximately \$3,500.

